

# ITALO

## Automatic Enzymatic Analyzers



THE RIGHT MODEL  
FOR EVERY KIND  
OF LAB



ITALO<sup>XL</sup>



ITALO<sup>L</sup>



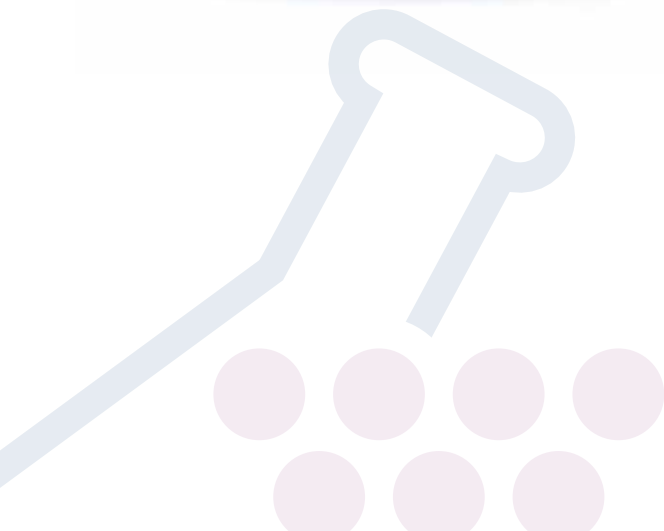
ITALO<sup>M</sup>

ITALO<sup>M</sup>



ITALO<sup>S</sup>

ITALO<sup>S</sup>





# ITALO<sup>XL</sup>

## Double arm



### BARCODE READER

- Avoids reagents' placement mistakes
- Stores kits' lot and expiry date.
- Associates kit to usage calibration.



### LEVEL SENSOR

gives reagent or sample quantity.

### CRASH SENSOR

avoids needle's breakage in case an object (e.i. reagent's cap) gets in the arm's way.



- Washing station, 7 needles



- Rapid access cuvettes



- Easy-replacement lamp

# ITALO<sup>XL</sup>

## Automatic Enzymatic Analyzer

 **EXACTA**  
Wine & Beverage

### ITALO XL: 300 tests/hour, top performances thanks to the double sampling arm.



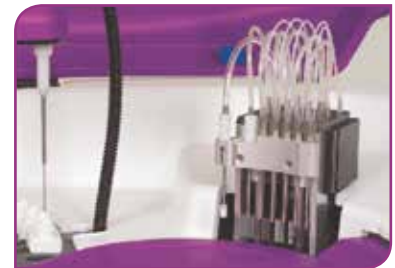
#### TECHNICAL FEATURES:

- 44 positions, reagents + diluents.
- 49 sample/calibrator/control positions on primary tubes (Ø 12÷13 mm x 75/100 mm).
- Up to 240 bi-reagent tests/hour; up to 300 mono reagent tests/hour.
- Built-in cuvettes washing station.
- 2 liquid detectors and shock sensor for samples and reagents.
- Analytical methods: End-point, mono or bichromatic, fixed time, kinetic, differential sample blank.
- Reaction temperature: +37 °C ± 0.1 °C.
- Automatic samples dilution.
- Calibration with linear/non linear curves up to 8 points, calibration curve auto dilution (linear regression, linear piece wise, cubic spline, polynomial).
- Control menu with Levy-Jennings plot.
- **Built-in Barcode Reader for reagents.**
- Diluter: 2, high-resolution ceramic, 500 µl (max volume).
- Reagent volume: 1 ÷ 400 microliters.
- Sample volume: 1 ÷ 300 microliters.
- Typical reaction volume: 200 ÷ 250 microliters.
- Wavelengths on-board: 8 pcs having 340 nm to 700 nm + one free position.
- Light source: Long life halogen lamp (2000 hours).
- Photometric linearity: 0 ÷ 3.0 OD.
- Reading cuvette: 80 pcs on-board re-washable made in Bionex®.
- Reagent cooler: 14 °C below ambient temperature.
- PC/Monitor/Keyboard/Mouse/Printer: external.
- L.I.S.: Bi-directional connection.
- Operating system: Windows®.
- 2 years warranty.
- 100% made in Italy.
- Dimensions: 93x72x60 cm.

# ITALO<sup>L</sup>



 **EXACTA**  
Wine & Beverage



- Washing station, 7 needles.



## BARCODE READER

- Avoids reagents' placement mistakes
- Stores kits' lot and expiry date.
- Associates kit to usage calibration.



## LEVEL SENSOR

gives reagent or sample quantity.

## CRASH SENSOR

avoids needle's breakage in case an object (e.i. reagent's cap) gets in the arm's way.



- Rapid access cuvettes.



- Easy-replacement lamp.

# ITALO<sup>L</sup>

## Automatic Enzymatic Analyzer

 **EXACTA**  
Wine & Beverage

### ITALO L: 240 tests/hour, the best compromise between speed and performances.



#### TECHNICAL FEATURES:

- 44 positions, reagents + diluents.
- 49 sample/calibrator/control positions on primary tubes ( $\varnothing$  12÷13 mm x 75/100 mm).
- Up to 200 tests/hour.
- Built-in cuvettes washing station.
- Liquid detector and shock sensor for samples and reagent.
- Analytical methods: End-point, mono or bichromatic, fixed time, kinetic, differential sample blank.
- Reaction temperature:  $+37\text{ }^{\circ}\text{C} \pm 0.1\text{ }^{\circ}\text{C}$ .
- Automatic samples dilution.
- Calibration with linear/non linear curves up to 8 points, calibration curve auto dilution (linear regression, linear piece wise, cubic spline, polynomial).
- Control menu with Levy-Jennings plot.
- **Built-in Barcode Reader for reagents.**
- Diluter: 1, high-resolution ceramic, 500  $\mu\text{l}$  (max volume).
- Reagent volume: 1÷400 microliters.
- Sample volume: 1÷300 microliters.
- Typical reaction volume: 200÷250 microliters.
- Wavelengths on-board: 8 pcs having 340 nm to 700 nm + one free position.
- Light source: Long life halogen lamp (2000 hours).
- Photometric linearity: 0÷3.0 OD.
- Reading cuvette: 80 pcs on-board re-washable made in Bionex<sup>®</sup>.
- Reagent cooler: 14  $^{\circ}\text{C}$  below ambient temperature.
- PC/Monitor/Keyboard/Mouse/Printer: external.
- L.I.S.: Bi-directional connection.
- Operating system: Windows<sup>®</sup>.
- Working temperature: 18-32  $^{\circ}\text{C}$ .
- 2 years warranty.
- 100% made in Italy.
- Dimensions: 93x72x60 cm.



# ITALO<sup>M</sup>



## BARCODE READER

- Avoids reagents' placement mistakes
- Stores kits' lot and expiry date.
- Associates kit to usage calibration.



## LEVEL SENSOR

gives reagent or sample quantity.

## CRASH SENSOR

avoids needle's breakage in case an object (e.i. reagent's cap) gets in the arm's way.



- Washing station, 7 needles.



- Rapid access cuvettes.



- Easy-replacement lamp.

# ITALO<sup>M</sup>

## Automatic Enzymatic Analyzer



**ITALO M: 120 tests/hour, designed to guarantee top performances with the simplest usage.**



### TECHNICAL FEATURES:

- 19 online parameters plus diluent with 35 ml R1/15 ml R2 vials.
- 15 sample/calibrator/control positions on primary tubes (Ø 12÷13 mm x 75/85 mm) and sample cups (3 ml).
- Up to 120 tests/hour.
- Built-in cuvettes washing station.
- Liquid detector and shock sensor for samples and reagents.
- Analytical methods: End-point, mono or bichromatic, fixed time, kinetic, differential sample blank.
- Reaction temperature: +37 °C ± 0.1 °C.
- Automatic samples dilution.
- Calibration with linear/non linear curves up to 8 points, calibration curve auto dilution (linear regression, linear piece wise, cubic spline, polynomial).
- Control menu with Levy-Jennings plot.
- **Built-in Barcode Reader for reagents.**
- Diluter: 1, high-resolution ceramic, 500 µl (max volume).
- Reagent volume: 1÷400 microliters.
- Sample volume: 1÷300 microliters.
- Typical reaction volume: 200 microliters.
- Wavelengths on-board: 8 pcs having 340 nm to 700 nm + one free position.
- Light source: Long life halogen lamp (2000 hours).
- Photometric linearity: 0÷3.0 OD.
- Reading cuvette: 80 pcs on-board re-washable made in Bionex®.
- Reagent cooler: 14 °C below ambient temperature.
- PC/Monitor/Keyboard/Mouse/Printer: external.
- L.I.S.: Bi-directional connection.
- Operating system: Windows®.
- Working temperature: 18-32°C.
- 2 years warranty.
- 100% made in Italy.
- Dimensions: 80x62x60 cm.

# ITALOS

## BARCODE READER

- Avoids reagents' placement mistakes
- Stores kits' lot and expiry date.
- Associates kit to usage calibration.

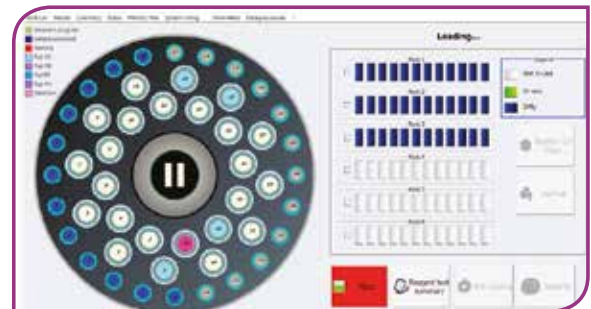


## LEVEL SENSOR

gives reagent or sample quantity.

## CRASH SENSOR

avoids needle's breakage in case an object (e.i. reagent's cap) gets in the arm's way.



## "ALL IN ONE" USER CONSOLE

- The simple graphic interface supports the user and simplifies daily operations.
- Modular and extendable software for future parameters.
- Easy-to-use, requires a base training.
- Remote maintenance available on request.
- Based on MS Windows® 10 operating system.



# ITALOS<sup>S</sup>

## 100% Automatic

## ITALO S: 120 tests/hour, compact solution with the best price!



### TECHNICAL FEATURES:

- Up to 120 tests/hour mono-reagent; Up to 60 tests/hour bi-reagent.
- On board automatic pretreatment.
- 1 liquid dispenser arm with capacitive liquid level detector and obstacle sensor.
- 24 reagents positions.
- 24 samples/calibrators/controls.
- Vials size: 12-13 mm Ø with 75/85 mm height, and 3 ml sample cups.
- Diluter: 1 high-precision micro-metering pump for dosing reagents and samples.
- Reagent volume: 1 ÷ 400 microliters.
- Sample volume: 1 ÷ 300 microliters.
- Dosing resolution 1 microliter.
- Typical reaction volume: 200/250 microliters.
- On-line Calibration, QC and patient results archive.
- Calibration curves. Linear regression, piece-wise, cubic spline, polynomial (selected automatically by assay application)
- Dilution: automatic/on request.
- Incubation & Reading cuvettes: 72 disposable on-board.
- Reaction temperature: +37 °C ± 0.1 °C.
- Wavelengths on-board: 8 pcs having 340 nm to 700 nm.
- Light source: Long life halogen lamp (2000 hours).
- Photometric linearity: 0 ÷ 3.0 OD.
- Low water consumption due to use of disposable cuvettes.
- Reagent cooler: 14 °C below ambient temperature.
- Full built-in Barcode Reader for reagents and sample.
- L.I.S.: Bi-directional, Ethernet connection.
- STAT function selectable on all sample positions.
- User console: external, "ALL IN ONE" computer with Touch Screen.
- Operating system: MS Windows® 10.
- Printer: USB connection.
- Working environment: Temperature 18 ÷ 32 °C / Relative humidity 30 ÷ 70%.
- Power management: automatic start-up and shut-down.
- Power supply: 100 ÷ 240 Vac, 50-60 Hz.
- Dimensions: 45x46x50 cm (LxPxH).

# ITALO

## Automatic Enzymatic Analyzers

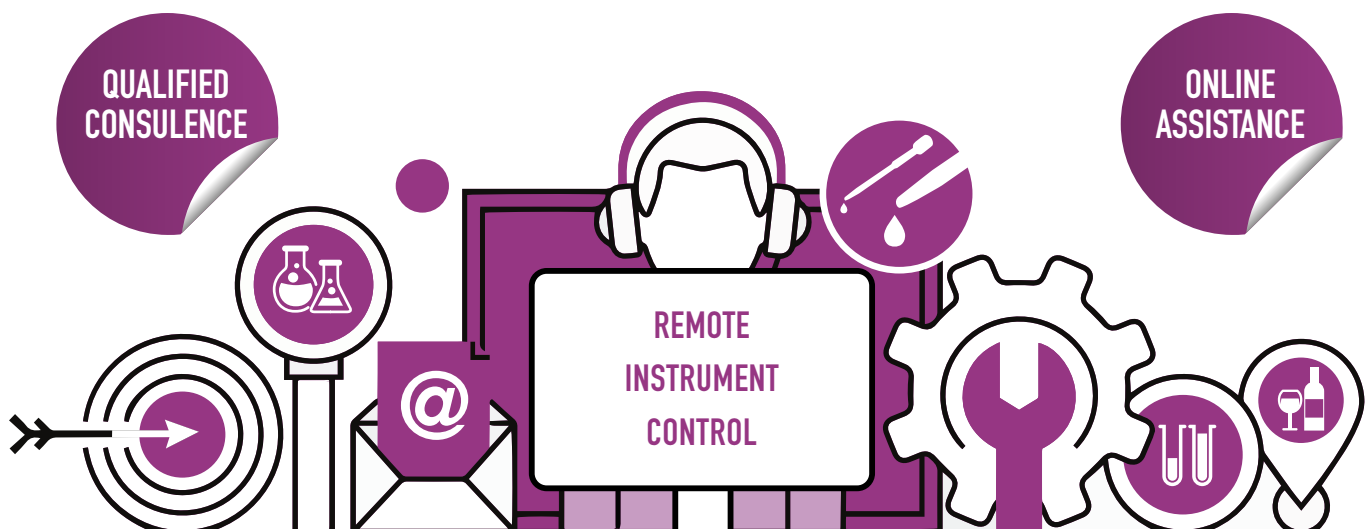


### SOFTWARE:

- ITALO's software is based on Windows® operating system.
- The user-friendly interface guides the operator and simplifies the daily tasks.
- Real time control for samples' results and reagents level.
- QC on three levels with Levy-Jennings plot.
- Graph of the working session.
- Remote assistance service.



OUR SPECIAL AND TRAINED TEAM AFTER-SALES SUPPORT WILL GIVE YOU QUALIFIED AND PROFESSIONAL ASSISTANCE.



WE PREPARE OUR METHODS DEEPLY KNOWING BIOCHEMICAL DYNAMICS IN EACH ENZYMATIC REACTION.



- **Ready-to-use bottles** to avoid contaminations and transfer errors.
- Stable liquid reagents O.I.V. method

### REAGENTS:

- ACETIC ACID
- L-ASCORBIC ACID
- CITRIC ACID
- D-GLUCONIC ACID
- D-LACTIC ACID
- L-LACTIC ACID
- L-MALIC ACID
- PIRUVIC ACID
- TARTARIC ACID
- TOTAL ACIDITY
- AMMINE BIOGENE
- ANTHOCYANINS
- AMMONIA NITROGEN
- ALPHA-AMMINIC NITROGEN
- IONIC CALCIUM
- CATECHINS
- COLOUR 420 - 520 - 620
- CO<sub>2</sub>
- IONIC IRON
- GLYCERINE
- GLUCOSE-FRUCTOSE
- GLUCOSE
- REDUCED GLUTATIONE
- MAGNESIUM
- pH
- TOTAL POLYPHENOLS (Enzymatic)
- POTASSIUM
- POTASSIUM (Enzymatic)
- COPPER
- FREE SO<sub>2</sub>
- TOTAL SO<sub>2</sub>
- UREA



**EXACTA+OPTECH LABCENTER S.p.A.**

Via Bosco, 21 - 41030 S. Prospero (MO) - Italy - Tel. +39 059 808 101 - Fax +39 059 908 556 - [export@exactaoptech.com](mailto:export@exactaoptech.com) - [www.exactaoptech.com](http://www.exactaoptech.com)